



RECP #: 752694  
 RECORDED 5/8/2019 AT 1:12 PM BK# 2620 PG# 1736  
 Debra K. Lee, CLERK OF LARAMIE COUNTY, WY PAGE 1 OF 1

# STATE OF WYOMING CORNER RECORD

(In compliance with the CORNER PERPETUATION AND FILING ACT, Wyoming Statutes, 1997 Section 33-29-140, et. seq., and the Rules and Regulations of the Board of Registrations for Professional Engineers and Professional Land Surveyors)

## NORTH QUARTER CORNER SECTION 6, T. 18 N., R. 61 W., 6TH P.M., LARAMIE COUNTY, WYOMING

**GLO:** A SANDSTONE 20X8X4 SET 15 IN DEEP MARKED 1/4 ON THE NORTH FACE FOR 1/4 SEC. COR.

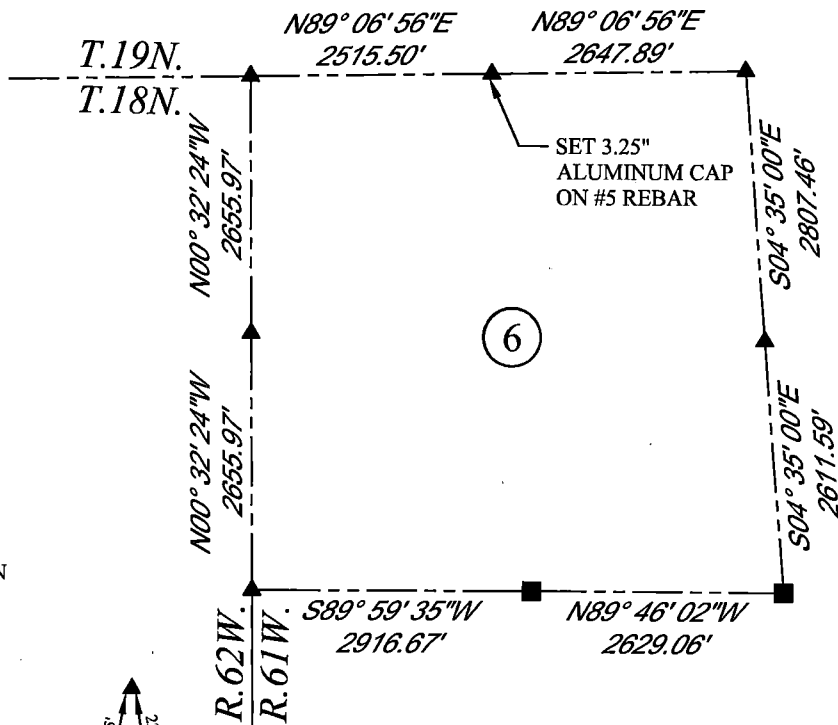
**FOUND:** NOTHING

**SET:** SET A 3.25" ALUMINUM CAP ON #5 REBAR, 0.2' BELOW SURFACE MARKED AS SHOWN. SET (2) MAG NAILS IN FENCE POSTS AS SHOWN. POSITION RE-ESTABLISHED BY SINGLE PROPORTION.

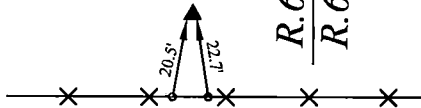
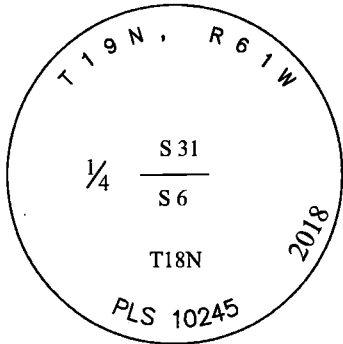


SCALE: NONE

NORTH DETERMINED BY  
G.P.S OBSERVATIONS



SET 3.25" ALUMINUM CAP, STAMPED AS SHOWN



**LEGEND:**

- FOUND BLM CAP
- FOUND USFS CAP
- FOUND STONE
- FOUND PRIVATE MONUMENT
- ◆ CALCULATED POSITION
- ▲ SET MONUMENT (LS10245)
- SECTION LINE

DATE OF FIELD WORK: 09/20/2018 OFFICE REFERENCE: MERIDEN

**CROSS INDEX DIAGRAM**

	1	2	3	4	5	6	7	8	9	10	11	12	13	14	15	16	17	18	19	20	21	22	23	24	25	
A																										
B																										
C		6																								
D			5																							
E				4																						
F					3																					
G			7																							
H				8																						
J					9																					
K						10																				
L			18																							
M				17																						
N					16																					
O						15																				
P			19																							
Q				20																						
R					21																					
S						22																				
T			30																							
U				29																						
V					28																					
W						27																				
X							26																			
Y								25																		
Z			31																							
	1	2	3	4	5	6	7	8	9	10	11	12	13	14	15	16	17	18	19	20	21	22	23	24	25	

WOOD  
2615 AVIATION DRIVE  
SHERIDAN, WY 82801  
PH: 307-675-6400



THIS CORNER RECORD WAS  
PREPARED BY ME OR UNDER  
MY DIRECTION AND  
SUPERVISION,  
SEAL AND SIGNATURE

